

Images of RS15 (antler-scraping) residues

using Leica MZ16 Stereomicroscope; all are extended depth-of-focus

The key to the images is at the beginning of the document.

The images published in this pdf are those that were used in the training portion of the experiment reported in Monnier et al. 2012, *J. Arch. Sci.* For questions, please contact Gilliane Monnier at monni003@umn.edu.

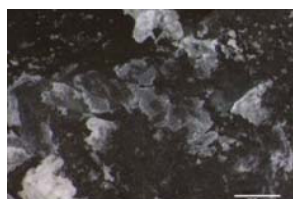
Naming conventions: 'RS' = Residue Study; 'D' = Dorsal side; 'V' = Ventral side; 'a', 'b', etc. = residue label; '25', '50', '115' = magnification used



RS15D_a_1_comp.tif



RS15D_b_1_115_comp.tif



RS15D_b_2_115_comp.tif



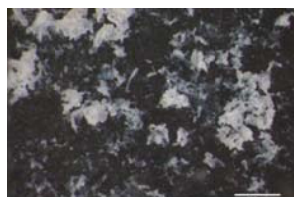
RS15D_b_25_comp.tif



RS15D_b_50_comp.tif



RS15D_c_25_comp.tif



RS15D_c_115_comp.tif



RS15D_d_115_comp.tif



RS15D_f_115_comp.tif



RS15V_d_115_comp.tif



RS15V_e_50_1_comp.tif



RS15V_e_50_2_comp.tif



RS15V_e_50_3_comp.tif



RS15V_e_50_4_comp.tif



RS15V_e_50_5_comp.tif



RS15V_e_50_6_comp.tif



RS15V_e_50_7_comp.tif



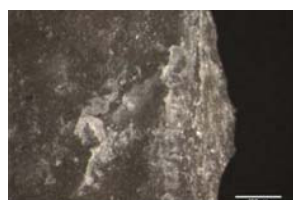
RS15V_e_115_1a_comp.tif



RS15V_e_115_2_comp.tif



RS15V_e_115_3_comp.tif



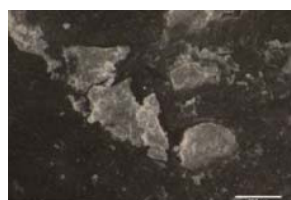
RS15V_e_115_4_comp.tif



RS15V_e_115_comp.tif



RS15V_f_50_comp.tif



RS15V_f_115_comp.tif



RS15V_g_50_comp.tif



RS15V_g_115_comp.tif

